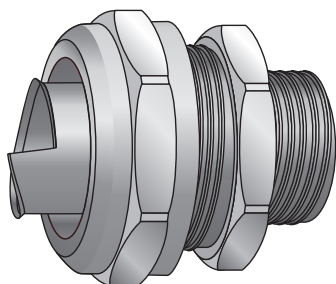


Raccordi metallici compatti per guaine LFMC e LFNC-B



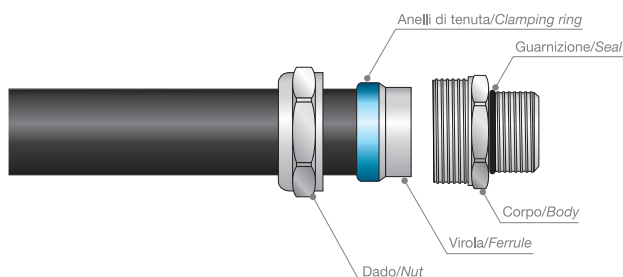
Compact metal fittings for LFMC and LFNC-B conduits



Impiego - Use

Raccordi metallici compatti per guaine metalliche rivestite LFMC e per guaine rinforzate LFNC-B. Gli elementi principali del raccordo sono in ottone nichelato e garantiscono pertanto una ottima resistenza alla corrosione. All'interno sono dotati di una boccola per proteggere i cavi dallo sfregamento e la virola ha un profilo particolare che semplifica il montaggio.

Metal fittings for LFMC coated metal conduits and LFNC-B reinforced conduits. The main elements of the fittings are made of nickel plated brass and they offer great corrosion resistance. Inside they are equipped with an insert to protect cables from rubbing and all ferrules have a special profile to simplify the installation.



Dati Tecnici - Technical data

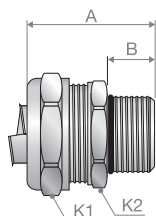
Caratteristica - Characteristics	Valore/proprietà - Value/property
Costruzione <i>Construction</i>	Raccordi costituiti da 5 elementi: corpo, dado di bloccaggio, anello di tenuta, virola, guarnizione* <i>Fittings made of 5 parts: body, counter nut, clamping ring, ferrule, sealing gasket*</i>
Materiale <i>Material</i>	Dado di bloccaggio e corpo in ottone nichelato, virola in acciaio zincato, anello di tenuta in poliammide PA6. Le ghiera esagonali sono in ottone nichelato. <i>Counter nut and body are made of nickel plated brass, ferrule is made of galvanized steel, clamping ring is made of PA6 polyamide.</i>
Temperatura minima di esercizio <i>Minimum working temperature</i>	-45°C
Temperatura massima di esercizio <i>Maximum working temperature</i>	+105°C
Grado di protezione <i>Protection class</i>	IP67 NEMA 4X con guaine LFMC IP68 per raccordi pressacavo collegati alla cassetta <i>IP67 NEMA 4X with LFMC conduits IP68 with cable-hose fittings on the switchbox</i>
Guaine compatibili <i>Compatible conduits</i>	LFMC, LFNC-B

* Per i raccordi in versione NPT la guarnizione non è inclusa.

* For NPT version fittings sealing gasket is not included.

Codifiche e dimensioni - Coding and dimensions

Raccordo diritto maschio - Straight male fitting



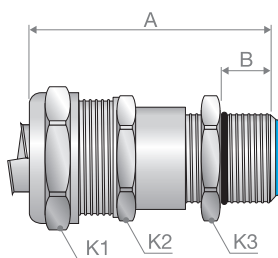
Codice <i>Code</i>	Versione <i>Version</i>	Filetto <i>Thread</i>	Dimensione guaina <i>Conduit size</i>	Passaggio utile <i>Min. internal bore [mm]</i>	Dimensioni <i>Sizes [mm]</i>				Confezione <i>Packaging [pz]</i>
					A	B	K1	K2	
AN712.016.1	ISO	M16 x 1,5	3/8"	11,0	31	10	26	24	10
AN712.017.1	ISO	M20 x 1,5	3/8"	11,0	31	10	26	24	10
AN712.020.1	ISO	M20 x 1,5	1/2"	14,5	32	10	29	27	10
AN712.025.1	ISO	M25 x 1,5	3/4"	19,4	33	10	35	33	5
AN712.032.1	ISO	M32 x 1,5	1"	24,7	36	12	45	42	5
AN712.040.1	ISO	M40 x 1,5	1" 1/4	33,3	40	13	53	50	2
AN712.050.1	ISO	M50 x 1,5	1" 1/2	38,0	46	14	62	58	2
AN712.063.1	ISO	M63 x 1,5	2"	49,0	52	16	76	72	2
AN710.011.1	PG	11	3/8"	11,0	31	10	26	24	10

Codice Code	Versione Version	Filetto Thread	Dimensione guaina Conduit size	Passaggio utile Min. internal bore [mm]	Dimensioni Sizes [mm]				Confezione Packaging [pz]
					A	B	K1	K2	
AN710.013.1	PG	13,5	3/8"	11,0	31	10	26	24	10
AN710.016.1	PG	16	1/2"	14,5	32	10	29	27	10
AN710.021.1	PG	21	3/4"	19,4	33	10	35	33	5
AN710.029.1	PG	29	1"	24,7	36	12	45	44	5
AN710.036.1	PG	36	1" 1/4	33,3	40	13	53	52	2
AN710.042.1	PG	42	1" 1/2	38,0	46	14	62	60	2
AN710.048.1	PG	48	2"	49,0	52	16	76	72	1
AN714.012.1 ⁽¹⁾	NPT	1/2"	3/8"	11,0	35	14	26	24	10
AN714.016.1 ⁽¹⁾	NPT	1/2"	1/2"	14,5	36	14	29	27	10
AN714.020.1 ⁽¹⁾	NPT	3/4"	3/4"	19,4	37	14	35	33	5
AN714.026.1 ⁽¹⁾	NPT	1"	1"	24,7	40	16	45	42	5
AN714.035.1 ⁽¹⁾	NPT	1" 1/4"	1" 1/4	33,3	43	16	53	50	2
AN714.040.1 ⁽¹⁾	NPT	1" 1/2"	1" 1/2	38,0	50	18	62	58	2
AN714.050.1 ⁽¹⁾	NPT	2"	2"	49,0	56	20	76	72	2

(1) Per i raccordi in versione NPT la guarnizione non è inclusa.

(1) For NPT version fittings sealing gasket is not included.

Raccordo pressacavo diretto maschio - Cable-hose straight male fitting

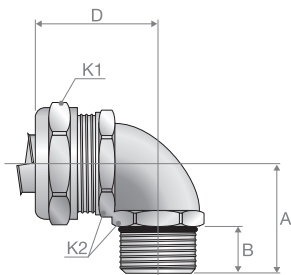


Codice Code	Versione Version	Filetto Thread	Dimensione guaina Conduit size	Diametro del cavo Cable diameter Min/Max [mm]	Dimensioni Dimensions [mm]					Confezione Packaging [pz]
					A	B	K1	K2	K3	
AN712.712.2	ISO	M12 x 1,5	1/4"	1÷5,2	46	9	19	17	14	10
AN712.713.2	ISO	M16 x 1,5	1/4"	1÷5,2	47	10	19	17	18	10
AN712.715.2	ISO	M16 x 1,5	5/16"	4÷8,3	50	10	22	20	18	10
AN712.714.2	ISO	M20 x 1,5	5/16"	4÷8,3	50	10	22	20	22	10
AN712.716.1	ISO	M16 x 1,5	3/8"	4÷9,5	50	10	26	24	18	10
AN712.717.1	ISO	M20 x 1,5	3/8"	4÷9,5	50	10	26	24	22	10
AN712.720.1	ISO	M20 x 1,5	1/2"	6÷13	53	10	29	27	22	10
AN712.722.1	ISO	M25 x 1,5	1/2"	6÷13	54	10	29	27	27	5
AN712.725.1	ISO	M25 x 1,5	3/4"	10÷18	56	10	35	33	27	5
AN712.728.1	ISO	M32 x 1,5	3/4"	10÷18	58	12	35	33	35	5
AN712.732.1	ISO	M32 x 1,5	1"	16÷25	61	12	45	42	35	5
AN712.735.1	ISO	M40 x 1,5	1"	16÷25	63	13	45	42	43	2
AN712.740.1	ISO	M40 x 1,5	1" 1/4	22÷32	69	13	53	50	43	2

I raccordi pressacavo diretto maschio sono privi di omologazione UL/CSA.

The cable-hose straight male fittings are without UL/CSA approval.

Raccordo maschio 90° - 90° male fitting

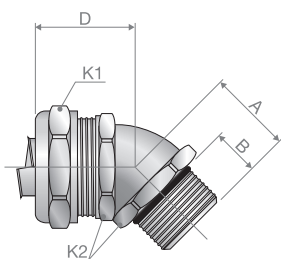


Codice Code	Versione Version	Filetto Thread	Dimensione guaina Conduit size	Passaggio utile Min. internal bore [mm]	Dimensioni Sizes [mm]					Confezione Packaging [pz]
					A	B	K1	D	K2	
AN712.916.1	ISO	M16 x 1,5	3/8"	11,0	26	10	26	31	22	10
AN712.917.1	ISO	M20 x 1,5	3/8"	11,0	26	10	26	32	24	10
AN712.920.1	ISO	M20 x 1,5	1/2"	14,5	28	10	29	34	27	10
AN712.925.1	ISO	M25 x 1,5	3/4"	19,4	32	10	35	40	33	5
AN712.932.1	ISO	M32 x 1,5	1"	24,7	40	12	45	49	42	5
AN712.940.1	ISO	M40 x 1,5	1" 1/4	33,3	46	13	53	53	52	2
AN712.950.1	ISO	M50 x 1,5	1" 1/2	38,0	52	14	62	57	60	2
AN712.963.1	ISO	M63 x 1,5	2"	49,0	62	16	76	68	72	2
AN710.911.1	PG	11	3/8"	11,0	26	10	26	32	24	10
AN710.913.1	PG	13,5	3/8"	11,0	26	10	26	32	24	10
AN710.916.1	PG	16	1/2"	14,5	28	10	29	34	27	10
AN710.921.1	PG	21	3/4"	19,4	32	10	35	40	33	5
AN710.929.1	PG	29	1"	24,7	40	12	45	49	42	5
AN710.936.1	PG	36	1" 1/4	33,3	46	13	53	53	52	2
AN710.942.1	PG	42	1" 1/2	38,0	52	14	62	57	60	2
AN710.948.1	PG	48	2"	49,0	62	16	76	68	72	2
AN714.912.1 ⁽¹⁾	NPT	1/2"	3/8"	11,0	30	14	26	32	24	10
AN714.916.1 ⁽¹⁾	NPT	1/2"	1/2"	14,5	32	14	29	34	27	10
AN714.920.1 ⁽¹⁾	NPT	3/4"	3/4"	19,4	36	14	35	40	33	5
AN714.926.1 ⁽¹⁾	NPT	1"	1"	24,7	44	16	45	49	42	5
AN714.935.1 ⁽¹⁾	NPT	1" 1/4"	1" 1/4	33,3	49	16	53	53	52	2
AN714.940.1 ⁽¹⁾	NPT	1" 1/2"	1" 1/2	38,0	56	18	62	57	60	2
AN714.950.1 ⁽¹⁾	NPT	2"	2"	49,0	66	20	76	68	72	2

* Per i raccordi in versione NPT la guarnizione non è inclusa.

* For NPT version fittings sealing gasket is not included.

Raccordo maschio 45° - 45° male fitting



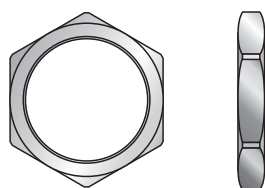
Codice Code	Versione Version	Filetto Thread	Dimensione guaina Conduit size	Passaggio utile Min. internal bore [mm]	Dimensioni Dimensions [mm]					Confezione Packaging [pz]
					A	B	K1	D	K2	
AN712.415.0 ⁽²⁾	ISO	M16 x 1,5	5/16"	8,3	19	10	26	27	22	10
AN712.414.0 ⁽²⁾	ISO	M20 x 1,5	5/16"	8,3	20	10	26	28	24	10
AN712.416.1	ISO	M16 x 1,5	3/8"	11,0	19	10	26	27	22	10
AN712.417.1	ISO	M20 x 1,5	3/8"	11,0	20	10	26	28	24	10
AN712.420.1	ISO	M20 x 1,5	1/2"	14,5	21	10	29	30	27	10
AN712.425.1	ISO	M25 x 1,5	3/4"	19,4	23	10	35	33	33	5

Codice Code	Versione Version	Filetto Thread	Dimensione guaina Conduit size	Passaggio utile Min. internal bore [mm]	Dimensioni Dimensions [mm]					Confezione Packaging [pz]
					A	B	K1	D	K2	
AN712.432.1	ISO	M32 x 1,5	1"	24,7	28	12	45	38	42	5
AN712.440.1	ISO	M40 x 1,5	1" 1/4	33,3	33	13	53	39	52	2
AN712.450.1	ISO	M50 x 1,5	1" 1/2	38,0	35	14	62	46	60	2
AN712.463.1	ISO	M63 x 1,5	2"	49,0	40	16	76	53	72	2
AN712.475.1 ⁽²⁾	ISO	M75 x 1,5	2" 1/2	60,7	51	20	90	65	85	1
AN714.412.0 ⁽²⁾	NPT	1/2"	5/16"	8,3	24	14	26	28	24	10
AN714.412.1	NPT	1/2"	3/8"	11,0	24	14	26	28	24	10
AN714.416.1	NPT	1/2"	1/2"	14,5	25	14	29	30	27	10
AN714.420.1	NPT	3/4"	3/4"	19,4	27	14	35	33	33	5
AN714.426.1	NPT	1"	1"	24,7	32	16	45	38	42	5
AN714.435.1	NPT	1" 1/4	1" 1/4	33,3	36	16	53	39	52	2
AN714.440.1	NPT	1" 1/2	1" 1/2	38,0	39	18	62	46	60	2
AN714.450.1	NPT	2"	2"	49,0	44	20	76	53	72	2
AN714.463.1 ⁽²⁾	NPT	2" 1/2	2" 1/2	60,7	56	25	90	65	85	1
AN714.475.1 ⁽²⁾	NPT	3"	3"	75,5	61	27	108	74	102	1

(2) Questo codice è privo di omologazione UL/CSA.

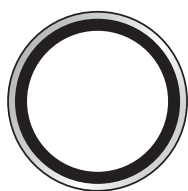
(2) This code is without UL/CSA approval.

Ghiere esagonali - Hexagonal lock nut



Codice Code	Versione Version	Filetto Thread	Confezione Packaging [pz]
AN880.116.0	ISO	M16	50
AN880.120.0	ISO	M20	50
AN880.125.0	ISO	M25	25
AN880.132.0	ISO	M32	20
AN880.140.0	ISO	M40	10
AN880.150.0	ISO	M50	10
AN880.163.0	ISO	M63	5
AN880.011.0	PG	11	50
AN880.013.0	PG	13,5	50
AN880.016.0	PG	16	50
AN880.021.0	PG	21	20
AN880.029.0	PG	29	20
AN880.036.0	PG	36	10
AN880.042.0	PG	42	5
AN880.048.0	PG	48	5
AN880.216.0	NPT	1/2"	50
AN880.220.0	NPT	3/4"	20
AN880.226.0	NPT	1"	20
AN880.235.0	NPT	1"1/4	20
AN880.240.0	NPT	1"1/2	10
AN880.250.0	NPT	2"	10

Guarnizioni con anello di supporto - Sealing gasket with back plate



Codice <i>Code</i>	Versione <i>Version</i>	Filetto <i>Thread</i>	Confezione <i>Packaging [pz]</i>
TB5262	NPT	1/2"	50
TB5263	NPT	3/4"	25
TB5264	NPT	1"	25
TB5265	NPT	1"1/4	5
TB5266	NPT	1"1/2	5
TB5267	NPT	2"	5
TB5268	NPT	2"1/2	1